



30 MILKWOOD MEADOW - ERF 3315 **CONTEMPORARY 4-BEDROOM, ARCHITECT-DESIGNED HOME**

346m² | Developer-Completed | R4 960 000

A modern, architect-designed residence offering spacious family living and exceptional outdoor entertainment.

This 4-bedroom, 4-bathroom home delivers a generous 346m² of contemporary, practical living - exclusively marketed by Pam Golding Properties in collaboration with Collins Residential.

Key Features:

- 4-Bedrooms - includes a private first-storey master suite
- 4-Bathrooms - each bedroom with a dedicated bathroom
- 346 m² of contemporary indoor-outdoor living
- 258m² internal home space
- 88m² extensive external decking
- Open-plan kitchen, dining & lounge space
- Gourmet kitchen with separate scullery and pantry
- Practical kitchen yard
- Braai/firepit deck for effortless entertaining
- Double garage and ample storage



Front Elevation

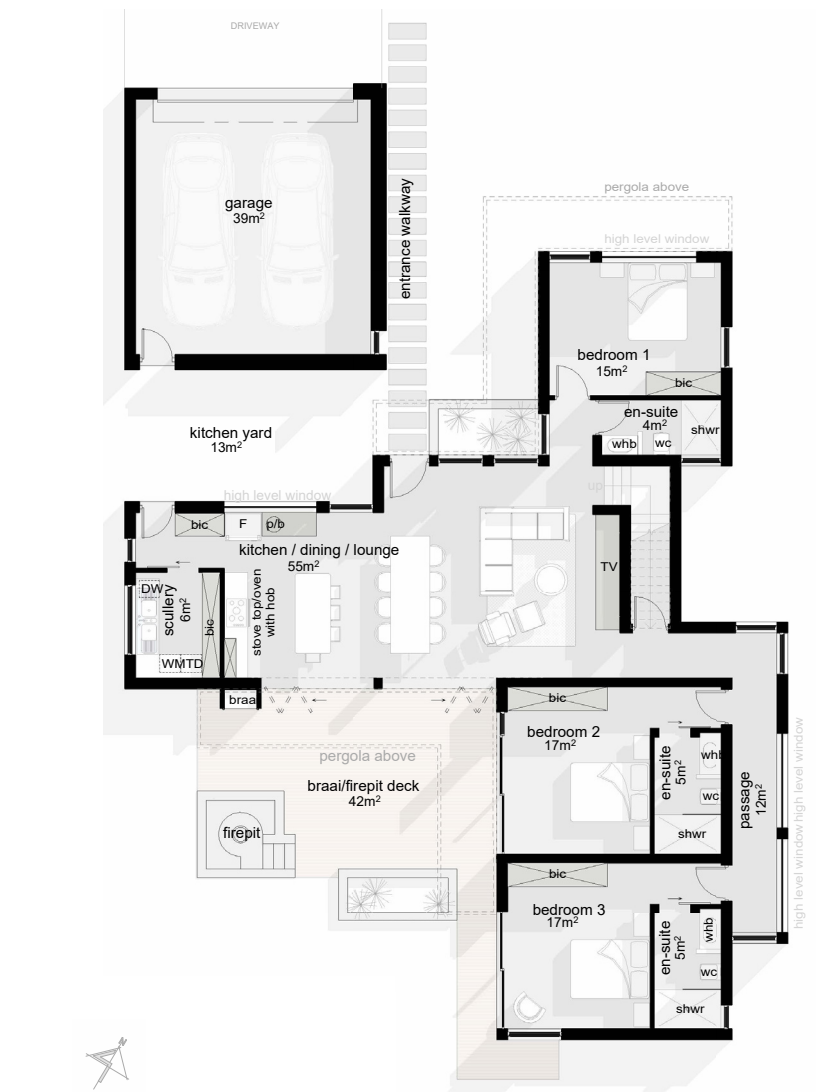


Schedule a Viewing

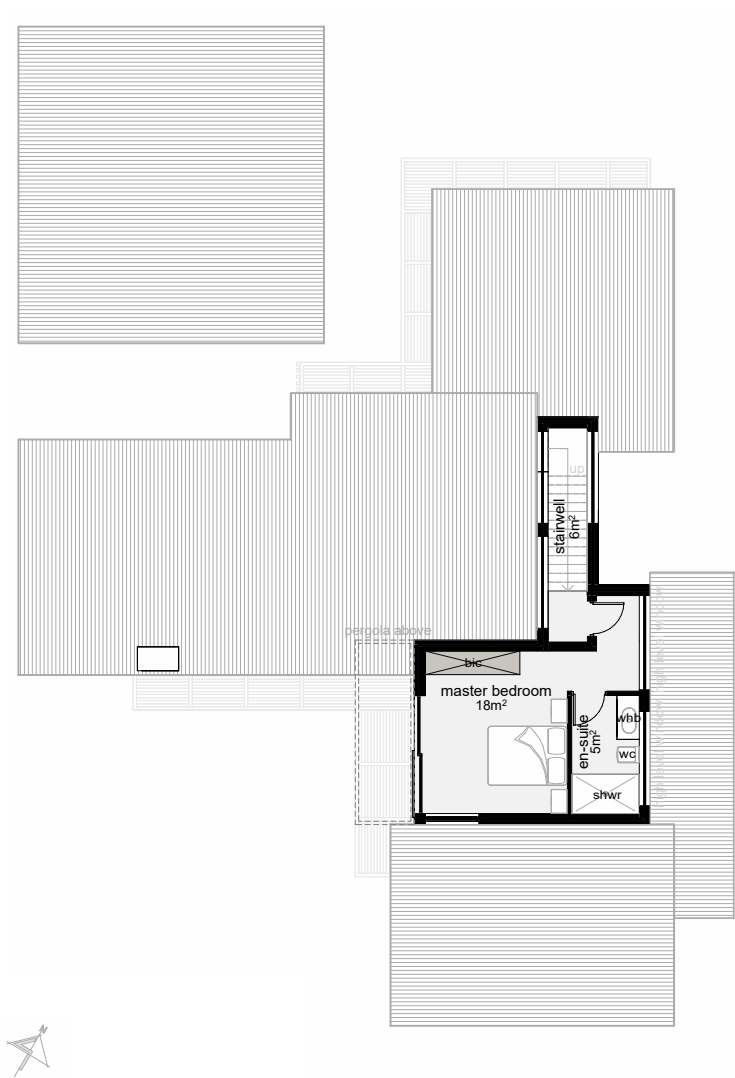
Tracey Bull - 084 654 0654 | tracey.bull@pamgolding.co.za

KentonEcoEstateHomes.co.za

GROUND FLOOR



FIRST FLOOR



Schedule a Viewing
 Tracey Bull - 084 654 0654 | tracey.bull@pamgolding.co.za
 KentonEcoEstateHomes.co.za