

The logo features the word "Fairmont" in a white, elegant script font. Below it, the words "RESIDENCES" and "SOLARA TOWER DUBAI" are written in a smaller, white, all-caps sans-serif font, stacked vertically. The background is a dark, gradient brown with glowing, curved light streaks in shades of gold and orange, suggesting a sunset or sunrise over a cityscape.

*Fairmont*  
RESIDENCES  
SOLARA TOWER DUBAI

AT FAIRMONT RESIDENCES SOLARA TOWER DUBAI, YOU ARE INVITED TO DREAM BEYOND LIMITS AND SAVOUR LIFE WITHOUT COMPROMISE.



*Inspired by* **NATURE,**  
*Defined by* **ELEGANCE,**  
**UNVEIL THE ART**  
*of* **ELEVATED LIVING**

**U**nveil a world of timeless refinement at Fairmont Residences Solara Tower Dubai, where every detail is meticulously curated to celebrate effortless living.

Elegant design blends with unrivalled hospitality to create a harmonious living experience. The thoughtful integration of nature enhances this harmony, offering a genuine sense of indulgence.



The Location





Where **BOUNDLESS**  
**EXPERIENCES** *never cease*  
to **WONDER**

**S**ituated in Downtown Dubai, one of the world's most prestigious addresses, the residences are ideally placed amongst the most iconic attractions.

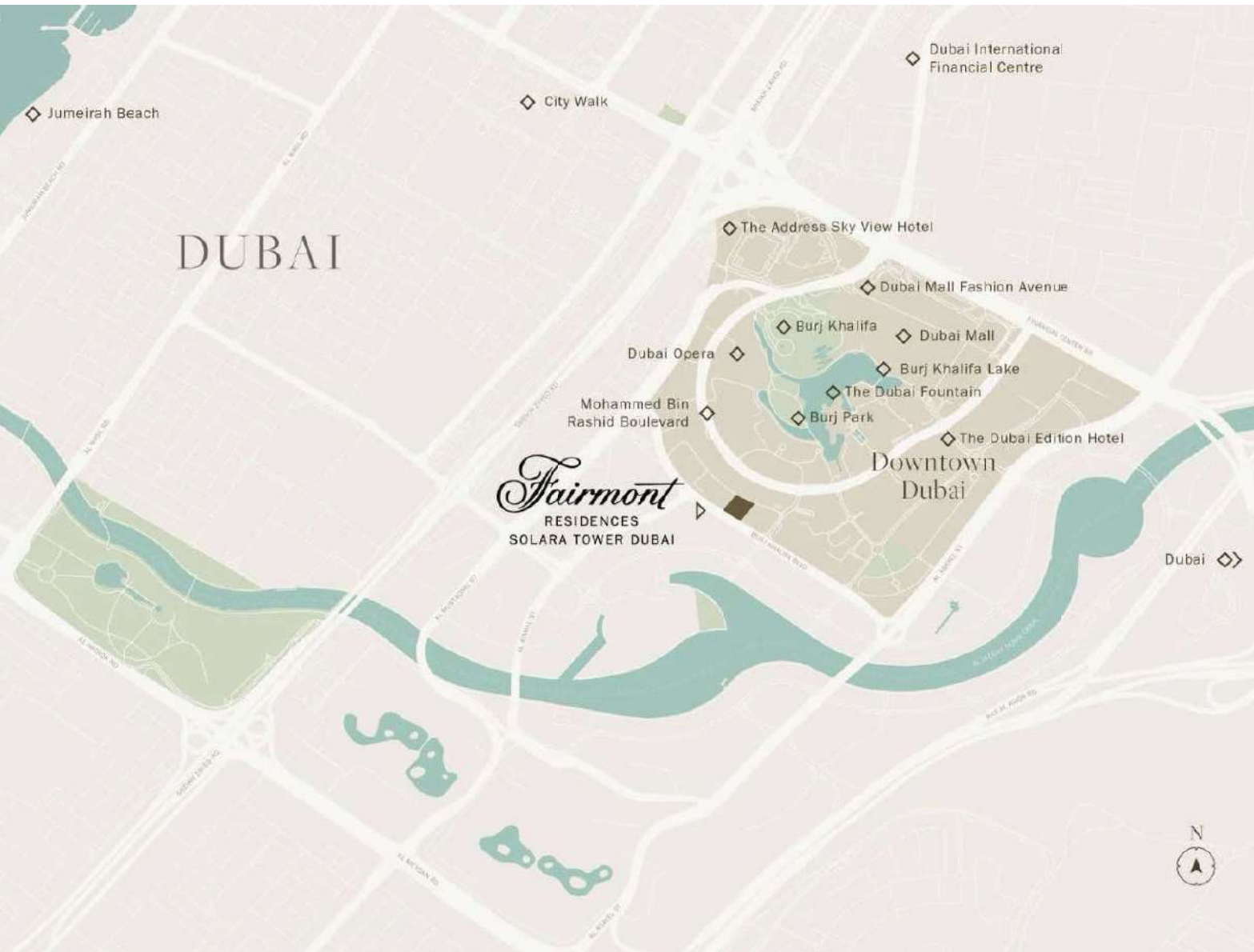


*The most prime location*  
in **DOWNTOWN**  
**DUBAI**

POINTS OF INTEREST

🕒 BY CAR

- **Burj Khalifa:** 1,5 Km | 5 min
- **Dubai Mall:** 1,7 Km | 5 min
- **Jumeirah Beach:** 9 Km | 12 min
- **Int. Modern Hospital:** 12 Km | 15 min
- **Infinity Bridge:** 17 Km | 18 min



## Dubai DOWNTOWN

### POINTS OF INTEREST

🚗 BY CAR

- **Mohammed Bin Rashid Blvd:** 500 m | 2 min
- **Burj Park:** 850 m | 4 min
- **Dubai Opera:** 1 Km | 4 min
- **Burj Khalifa Lake:** 1,2 Km | 4 min
- **Burj Khalifa:** 1,5 Km | 5 min
- **Dubai Mall:** 1,7 Km | 5 min
- **City Walk:** 4,2 Km | 9 min
- **DIFC:** 5 Km | 12 min
- **Jumeirah Beach:** 9 Km | 12 min
- **The Dubai Edition Hotel:** 1.8 km - 7 min
- **The Dubai Fountain:** 2,4 km - 7 min
- **Dubai Mall Fashion Avenue:** 1,7 km 6 min

### RESTAURANTS:

**Burj Khalifa:** 1,5 km - 5 min

- Armani Ristorante
- At.mosphere
- Armani/Amal

**The Dubai Edition Hotel:** 1.8 km - 7 min

- Duomo Dubai
- Sumosan Dubai
- Masti

**The Address Sky View Hotel:** 3,2 km - 9 min

- CÉ LA VI Dubai



STROLL PAST THE MAJESTIC BURJ KHALIFA, SOAKING IN THE SIGHTS AND SOUNDS OF THE WORLD'S LARGEST FOUNTAIN SHOW,  
OR EMBARK ON AN ELEGANT SHOPPING JOURNEY AT THE WORLD'S GREATEST MALL.

Whether you prefer to explore the scenic Dubai Water Canal or to experience the cosmopolitan buzz during spellbinding performances at the Dubai Opera, this neighbourhood sets the stage for the quintessential, the rare, and the exquisite.





*Embrace a* **LIFESTYLE** *where the*  
**POSSIBILITIES** *are as* **LIMITLESS**  
*as the* **SKYLINE**

FILLING EACH DAY WITH MOMENTS THAT INSPIRE  
AND CAPTIVATE YOU.

The Residences

*Discover the* **WHISPERED**  
**ELEGANCE** *of* **URBAN LIVING**

**F**airmont Residences Solara Tower Dubai features an impressive collection of 1 to 4 bedroom residences, alongside two duplex penthouses featuring five bedrooms each. Each unit boasts generously sized, airy layouts with large floor-to-ceiling windows opening onto some of the largest terraces in Downtown Dubai. Each residence guarantees dual-facing views, offering a breathtaking full view of the Burj Khalifa, complemented by views of either The Dubai Fountain or the Dubai Water Canal.



*Inspired by*  
**SUN** *and* **NATURE**

**D**rawing on the tranquility and grace of Japanese design, the residences are crafted with nature and sunlight as central elements. The name Solara, derived from the Italian word for sun, embodies the vitality, optimism, and warmth of sun's energy, bringing to life spaces that radiate elegance and capture the essence of light.





ENHANCED BY LUXURIOUS COMFORTS

These design principles set the stage for an extensive array of world-class indoor and outdoor amenities. Whether

you seek relaxation, entertainment, or fitness, you'll find the perfect space to unwind, socialise, and rejuvenate.

HERE, A LIFE OF ELEGANCE AND COMFORT EFFORTLESSLY BLENDS  
WITH THE SERENE BEAUTY OF NATURE.

THESE RESIDENCES OFFER NOT JUST A HOME, BUT A LIFESTYLE  
DEFINED BY EXCEPTIONAL QUALITY AND A LEGACY OF EXCELLENCE

SOLARA TOWER ENTRANCE



Residences



LOBBY



## ELEGANT *and* SUMPTUOUS INTERIORS

**W**ithin your own residence, elegant and sumptuous interiors provide the perfect refuge from the hustle and bustle. Crafted to perfection, the design features an array of natural materials, exquisite finishes, and curated details.



3 BEDROOM LIVING AND DINING ROOM

RESIDENCES OVERVIEW

55  
FLOORS

246  
RESIDENCES

*High Ceilings*

3.65 High ceilings are a key feature of these stunning residences, with penthouses featuring double ceiling height duplex. This design creates the impression of a towering 77-floor building.

*Five distinct layouts*

Layouts range from 1 to 4 bedrooms, plus two exclusive 5-bedroom duplex penthouses. All residences except the 1-bedroom residences, include a maid's room.



Fairmont Residences Solara Tower Dubai

3 BEDROOM MASTER BEDROOM



2 BEDROOM  
LIVING AND DINING ROOM

EXQUISITE SPACES FOR ENTERTAINING GUESTS, CONNECTING WITH LOVED ONES, OR SIMPLY DELIGHTING THE SENSES.



2 BEDROOM MASTER BEDROOM



1 BEDROOM LIVING ROOM



#### RESIDENCE SPECIFICATIONS

##### *Fully Fitted Interiors*

Residences are delivered fully fitted, though unfurnished, allowing you to personalise your home.

##### *High-Quality Appliances*

Blending elegance and functionality, the high-quality design of German integrated appliances like Miele, are designed for style, durability, and functionality.

##### *Spacious Interiors*

The layout of the building fosters a sense of spaciousness and fluidity. Starting from 1-bedroom residences at 950 sq.ft.



2 BEDROOM SECOND BATHROOM



#### RESIDENCE SPECIFICATIONS

##### *Generous terrace space*

Each unit boasts large terraces that maximise the views. Begin your day by stepping onto your panoramic terrace, soaking up the magical energy of the sun's rays at dawn as the city brightens into view.

As the sun sets, transform your terrace into the perfect setting for alfresco dining in style.

##### *Stunning views*

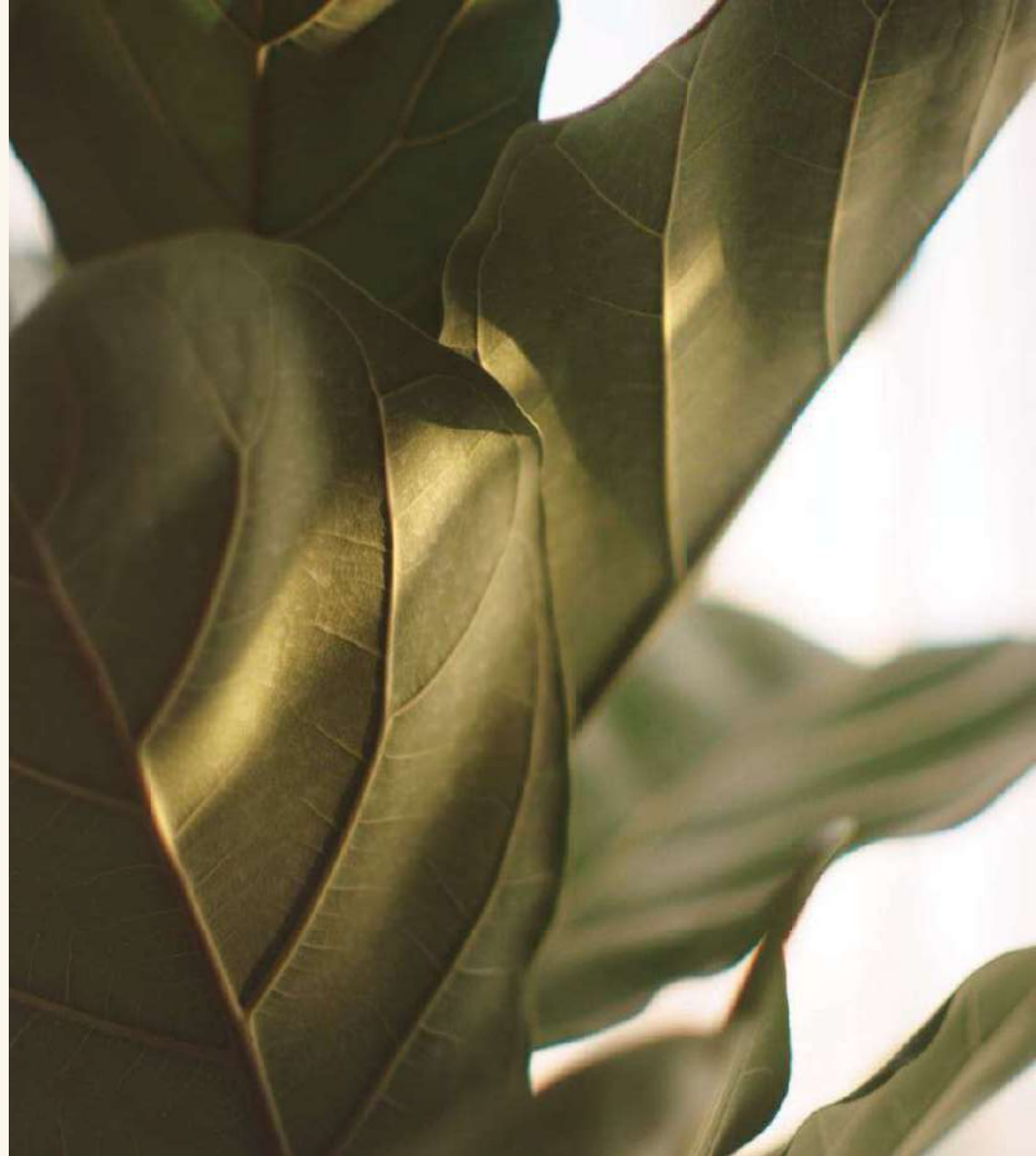
Each residence offers panoramic views, from the majestic Burj Khalifa with its iconic fountain, to the tranquil Dubai Water Canal.

RESIDENCE SPECIFICATIONS

*Sustainable Design Features*

The design skilfully integrates sustainable practices, including self-shading balconies to reduce heat gain and maximise natural light.

Greenery is incorporated throughout the building to enhance biodiversity and improve air quality.





*Exclusive* 4-BEDROOM  
RESIDENCES

**P**erched on the top floors, these residences offer unobstructed views and lavish amenities in a contemporary style that transcends time.

Here, comfort and elegance take on a whole new meaning.

*Glass-Sided Pools*

Take a dip in your private pool and enjoy the best vantage point over Dubai's skyline.

*Expansive Indoor and Outdoor Dining Areas*

Ideal for entertaining or enjoying family meals above breathtaking vistas. Each residence elevates every moment, whether it's a lively gathering or a serene evening.

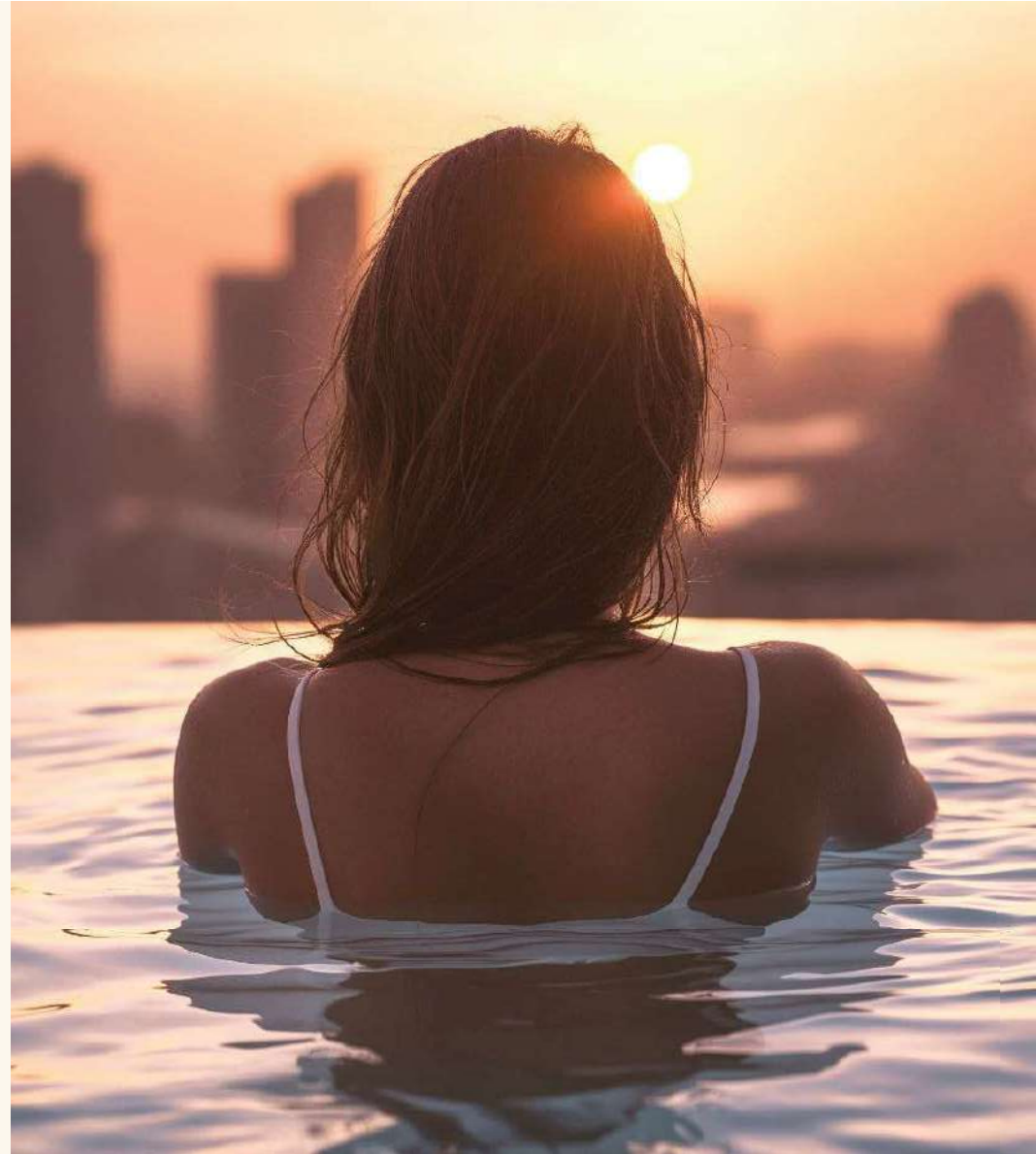
*Additional Features:*

- Two Kitchens—a back-of-house kitchen and a front-of-house kitchen
- Walk-in Wardrobes in the master bedroom.

4 BEDROOM RESIDENCES

3,754 TO 5,570  
SQ.FT

KEY FEATURES OF ALL  
4-BEDROOM RESIDENCES





4 BEDROOM LIVING AND DINING ROOM



4 BEDROOM MASTER BEDROOM





4 BEDROOM MASTER BATHROOM





4 BEDROOM KITCHEN



## *Exclusive* 5 BEDROOM PENTHOUSES

**S**panning 19,637 sq.ft across three levels, the duplex penthouses offer an unparalleled experience of sophistication and exclusivity.

EXCLUSIVE FEATURES OFFERED  
IN ALL PENTHOUSES

*Private 9,496 sq.ft Rooftop  
Terrace*

Perfect for entertaining large gatherings, with views that captivate and inspire.

*Outdoor Bar*

Each duplex penthouse features a large private outdoor bar.

*Private Pools*

Each residence boasts two pools:

- A 14-meter pool on the lower floor terrace
- A 6-meter private pool on the master bedroom's private terrace.

*Outdoor Gym*

A private outdoor gym, perfect for maintaining an active lifestyle in a serene environment.





PENTHOUSE LIVING AND DINING ROOM

#### EXCLUSIVE FEATURES OFFERED IN ALL PENTHOUSES

##### *Three Distinct Living Areas*

Formal living, family living on the lower floor, and family living on the upper floor provide ample space for relaxation and gatherings.

##### *Generous Walk-in Wardrobes*

Both master bedrooms include spacious walk-in wardrobes.

##### *Two Kitchens*

Featuring a back-of-house kitchen and a front-of-house kitchen for seamless entertaining.

##### *Private Cinema*

Enjoy a cinematic experience in the comfort of your own home.

EXCLUSIVE FEATURES OFFERED  
IN ALL PENTHOUSES

*Private Office*

A dedicated private office for work or study.

*Private Elevator*

Direct access to your penthouse from the lobby.

*Spiral Staircase*

A stunning architectural feature that adds elegance and sophistication to the space.

5 BEDROOM PENTHOUSES

19,637

SQ.FT



PENTHOUSE LIVING AND DINING ROOM



PENTHOUSE MASTER BEDROOM



PENTHOUSE BATHROOM

*Nature-Inspired Luxury Finishes*

Only the finest materials are chosen, including solid wood, stone, marble, and plush textiles that bring nature indoors.



PENTHOUSE POWDER ROOM



PENTHOUSE MASTER BATHROOM



The Amenities

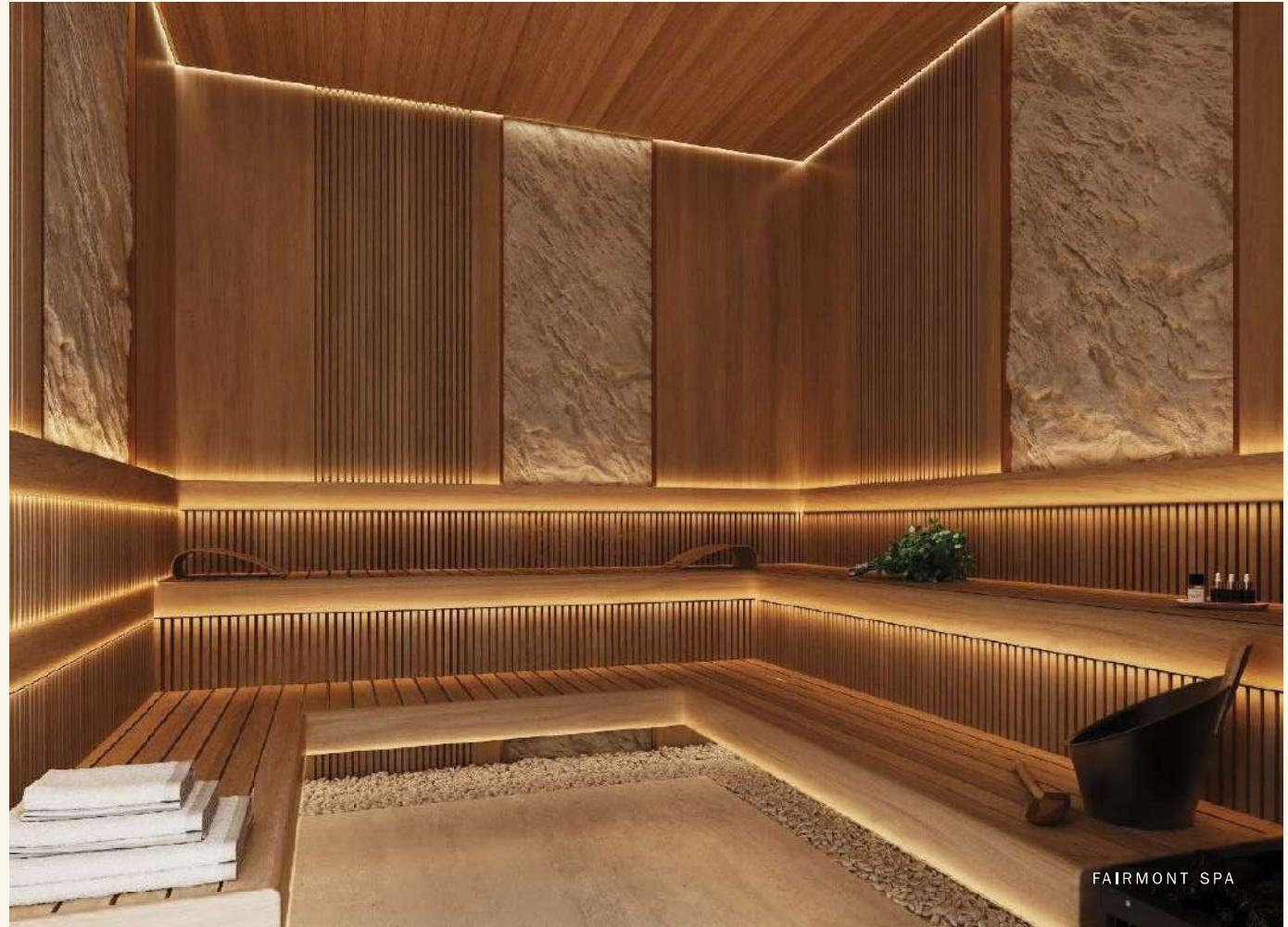
## *Private* AMENITIES *for Your* ULTIMATE ENJOYMENT

Fairmont Residences Solara Tower Dubai offers an unparalleled array of luxurious amenities to cater to your every need, from convenience and wellness to entertainment. Here, every detail is designed to make sure you and your guests enjoy a lifestyle of comfort and elegance within the sanctuary of your home.

### WELLNESS & FITNESS

#### *Spa and Gym*

Experience the holistic wellness and fitness offerings with Fairmont Fit and Fairmont Spa programs. Master the art of relaxation in our luxurious spa, featuring massage rooms, steam rooms, and saunas, all designed to promote your well-being. Our state-of-the-art fitness centre is equipped with the latest exercise machines and free weights.



FAIRMONT SPA



MASSAGE ROOM



Fairmont Residences Solara Tower Dubai

FAIRMONT FIT GYM



### *Padel Court*

Embrace the excitement of the fastest-growing sport. The padel court, ideal for playing with family or friends.

### *Golf Simulator*

Discover the joy of perfecting your swing with our golf simulator, transforming dreams into reality with every stroke.



PADEL COURT



WELLNESS & FITNESS

*Zen Gardens*

Inspired by Japanese garden design, these serene spaces feature harmonious arrangements of water elements, plants, and rocks, creating a peaceful retreat.

*Indoor|Outdoor Yoga*

Find your zen with spaces tailored for both indoor and outdoor yoga sessions.

## RECREATION

*Expansive Infinity Pool*

Spanning the entire width of the building, this 60-meter podium-level infinity pool provides a perfect setting for families and friends to rejuvenate and enjoy.



EXPANSIVE INFINITY POOL

## RECREATION

*Cinema*

Experience private screenings in our cozy and luxurious cinema room, equipped with the latest audio-visual technology for an immersive movie-watching experience.

*Entertainment Room*

Unleash your competitive spirit and create lasting memories in our entertainment room, featuring a pool table and foosball table, perfect for joyful and lively gatherings with friends and family.





PODIUM LEVEL RESTAURANT

## DINING

### *Restaurant*

Our fine dining restaurant, located on the podium level, offers an exclusive experience reserved just for residents. Delight in a richly inventive menu, crafted by acclaimed chefs, catering to diverse culinary preferences.

### *Owner's Lounge*

An exclusive space for residents to relax and socialise in an exclusive setting.



FAMILIES

*Kids Play Zone and Kids Club*

A dedicated area for children featuring a variety of play equipment and activities, including a kid's pool, play area and kid's club, ensuring young residents are entertained.





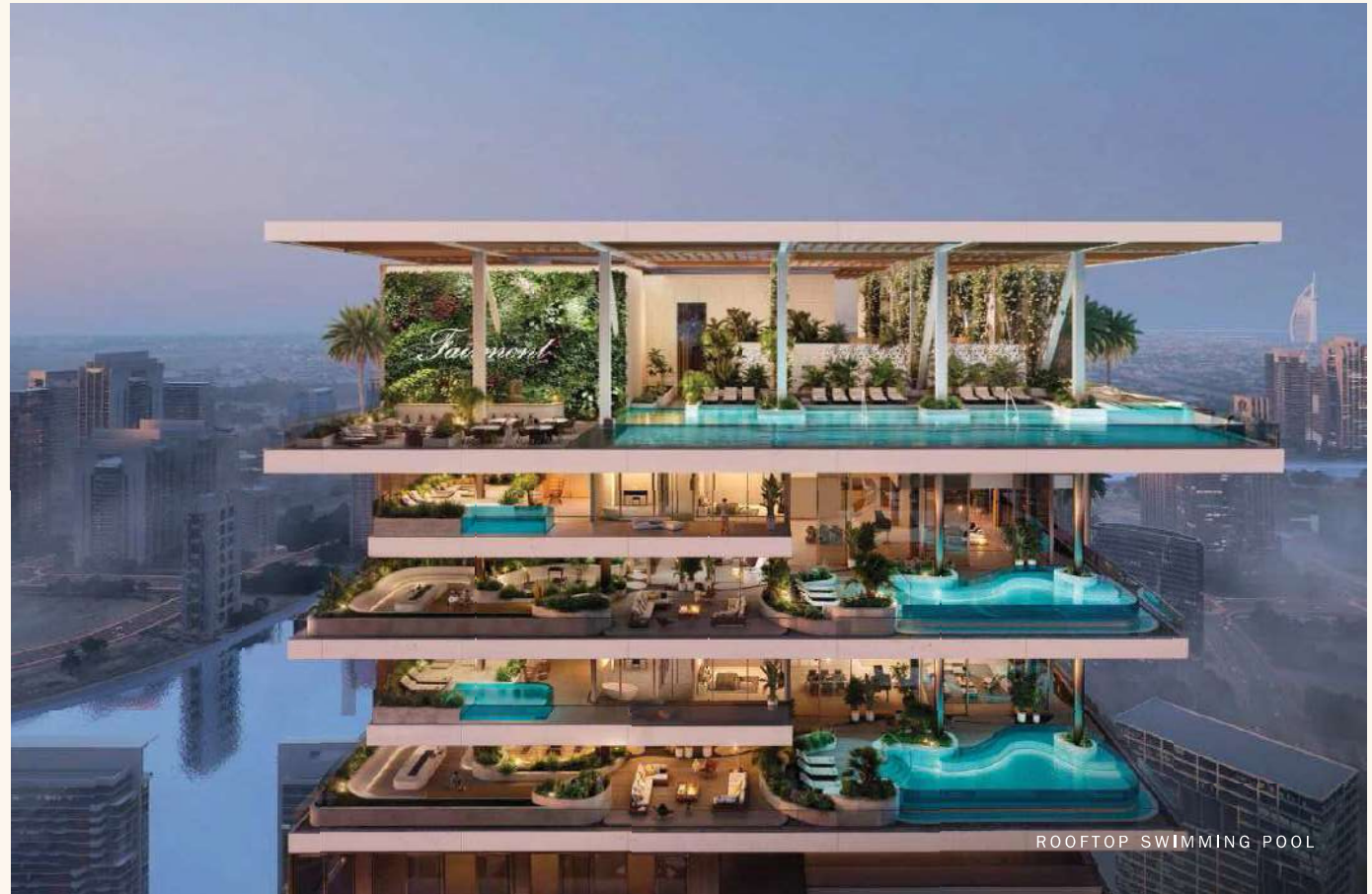
BUSINESS

*Private Meeting Rooms*

Fully equipped private meeting rooms for business or personal use ensuring convenience and privacy.

## *Rooftop* AMENITIES

Perched at a breathtaking 277 meters above street level, the rooftop offers a serene escape designed exclusively for adults. This stunning space is perfect for unquenchable socialites seeking alfresco dining as well as those looking for a tranquil retreat to relax and rejuvenate.



ROOFTOP SWIMMING POOL



WHETHER YOU'RE TOASTING WITH FRIENDS OR ENJOYING A QUIET EVENING UNDER THE STARS, THE ROOFTOP AMENITIES OFFER UNRIVALLED INDULGENCE AND A CELEBRATION OF LIFE AT ITS FULLEST.



ROOFTOP SWIMMING POOL

### *Rooftop Pool*

Spanning 40 meters, the rooftop pool offers a private setting surrounded by lush greenery and secluded seating areas. Perfect for relaxing while enjoying breathtaking views of Dubai's most iconic features.

Swim in the fresh breeze and soak up the sun in the highest pool of downtown.

### *Private Dining Areas*

The central partially shaded area offers elevated outdoor dining experiences. Residents can reserve a table for a night under the stars, enjoying nature and on the glittering city below.

### *Rooftop Pool Bar*

A chic space where you can unwind with a drink, enjoying the panoramic cityscape.

## ROOFTOP AMENITIES





Fairmont Residences Solara Tower Dubai

ROOFTOP POOL BAR

B e n e f i t s   &   S e r v i c e s

A WORLD OF PRIVILEGES AWAITS



*Delivering the BEST*  
**EXPERIENCE ANYWHERE**  
*in the CITY.*

Imagine a life where every detail is thoughtfully designed to elevate your daily living. Choosing Fairmont Residences Solara Tower Dubai is more than purchasing a property; it's about investing in an enduring legacy of luxury and comfort, supported by a dedicated team that anticipates your every need.

FAIRMONT OVERSEES EVERY ASPECT OF ITS BRANDED RESIDENCES, ENSURING THAT THE LUXURY STANDARDS YOU EXPECT ARE MAINTAINED CONSISTENTLY, EVEN YEARS DOWN THE LINE.

When it's time to refresh common areas or update amenities, Fairmont's impeccable standards guide every decision, ensuring enduring quality and value.

Let Fairmont's impeccable experiences enhance your living, creating an environment where you feel truly cared for.





**CORE SERVICES  
(INCLUDED IN SERVICE CHARGE)**

At Fairmont Residences Solara Tower Dubai, the following core services are included in your service charge to ensure convenience and exceptional quality of life:

- RESIDENCE CONCIERGE
- DOORMEN & VALET
- SECURITY
- OWNER SERVICES
- CLUBHOUSE / RESIDENCE LOUNGE STAFF
- ACCOR OWNERSHIP BENEFITS PROGRAM ANNUAL FEE
- COMMON AREA MAINTENANCE
- COMMON AREA HOUSEKEEPING
- COMMON AREA UTILITIES
- COMMON AREA "RESERVE FOR REPLACEMENT"
- WIFI INTERNET IN RESIDENCE LOUNGE
- GENERAL & ADMINISTRATIVE
- PROPERTY INSURANCE (BASE BUILDING/ COMMON AREAS)

## *Elevating* EVERYDAY LIVING *with à* *La* CARTE SERVICE

**À** La Carte Services are optional and subject to additional charges. When a Residence owner reserves an A La Carte Service, the resulting charge will typically be billed to their personal account. Residence Concierge coordinates all A La Carte Services, providing a single point of contact to Residents. A La Carte services are also customised around market needs, and may include:

### À LA CARTE SERVICE: with additional charges

- IN-RESIDENCE CATERING AND PERSONAL CHEF
- EVENT PLANNER
- SHOPPING SERVICES AND PERSONAL ASSISTANT
- CHILDCARE
- DRY CLEANING AND LAUNDRY
- PRIVATE TRANSPORTATION AND LIMOUSINE SERVICES
- IN-RESIDENCE HOUSEKEEPING
- IN-RESIDENCE MAINTENANCE
- "WHILE YOU ARE AWAY" MAINTENANCE PACKAGE  
Turnkey in-residence maintenance solutions for residents who travel frequently, ensuring your home is well-kept in your absence.
- PERSONAL TRAINER, YOGA AND FITNESS INSTRUCTION, MASSAGE THERAPIST
- FLORIST SERVICES
- TECHNOLOGY ASSISTANCE
- NUTRITIONIST, HEALTH, AND WELLNESS CONSULTATION
- PRE-ARRIVAL SHOPPING (GROCERY SHOPPING AND RE-PROVISIONING)
- PET MINDING, PET WALKING, AND RELATED SERVICES
- CAR DETAILING, CARWASH SERVICES, REFUELLING
- 24-HOUR EMERGENCY REPAIR
- After Hours Emergency Repair and Non-Routine or Specialised Repair and Maintenance



## *Exclusive* ACCOR OWNERSHIP BENEFITS *Programme*

### GLOBAL VVIP RECOGNITION

- EXCLUSIVE INVITATION TO JOIN DIAMOND STATUS IN ALL - ACCOR LIVE LIMITLESS
- GIFTING OF A GOLD STATUS IN ALL - ACCOR LIVE LIMITLESS TO A FAMILY OR FRIEND
- VIP RESERVATION DESK TO SUPPORT TRAVEL PLANNING ACROSS ACCOR'S GLOBAL NETWORK OF HOTELS, RESORTS, AND RELATED HOSPITALITY OFFERINGS
- AUTOMATIC UPGRADES ON ARRIVAL ACROSS MORE THAN 5,500 HOTELS AND RESORTS WORLDWIDE\*\*
- 20% OFF BEST AVAILABLE RATE WORLDWIDE\*

\* Eligibility continues for as long as Purchaser owns Accor branded real estate, Ownership Benefits Fee being included in the property service charge assessed to all Residence Owners.

\*\* At participating Accor brands and properties, subject to availability.



**All**  
ACCOR · LIVE LIMITLESS